

# New Method For Raising Queens

Hossein Yeganehrad  
Caspian Apiaries

# New Method for Raising Queens

## Introduction

This queen raising technique includes various steps that greatly increase the amount of worker jelly and royal jelly in the colony which is both the source of the queen larvae and the cell builder hive.

Jelly production is stimulated by: the presence of a queen, the presence of larvae and Caspian Solution.

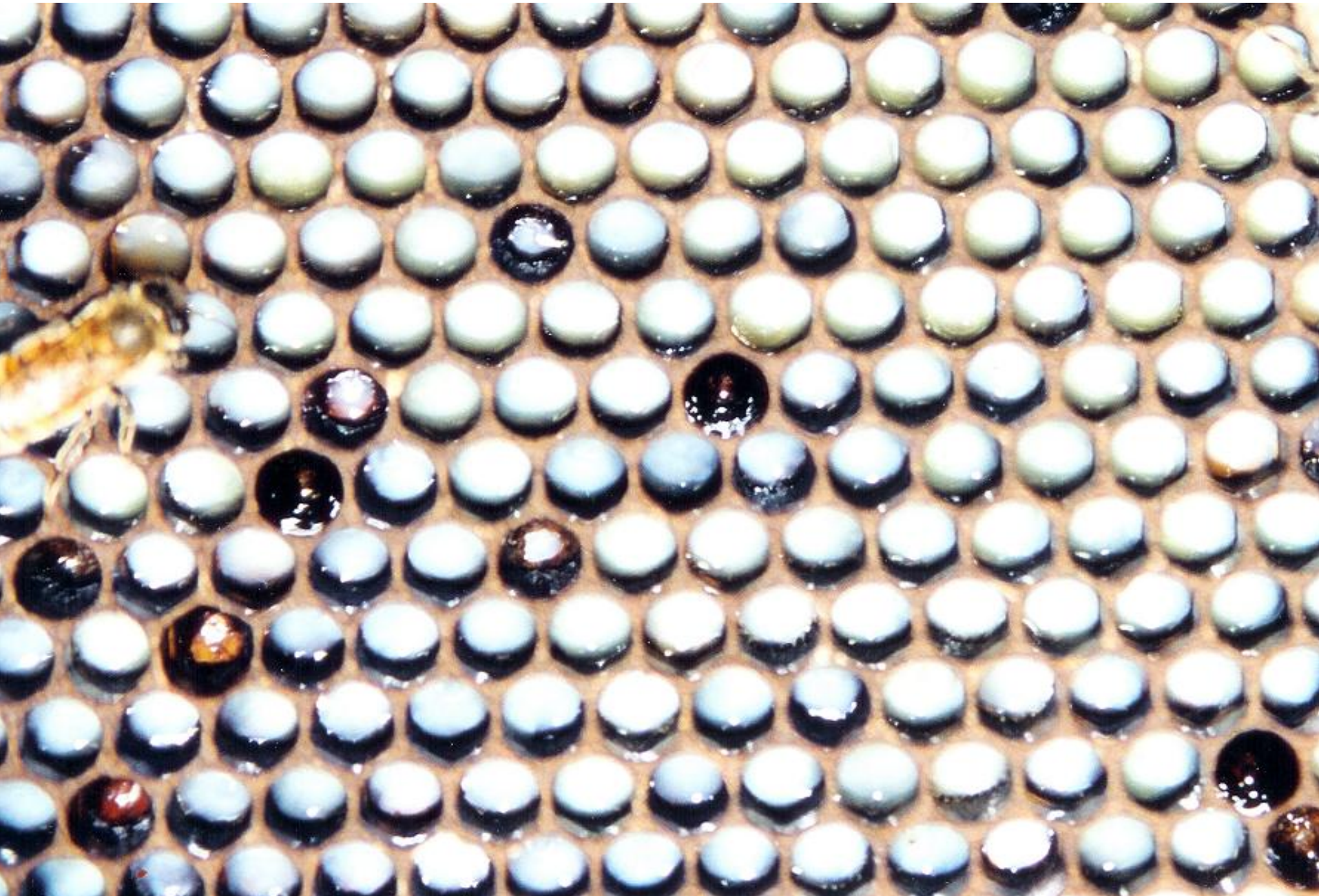
# New Method for Raising Queens

## Methods

- Day 1: Select a colony with a queen, a minimum of ten frames of population with at least 3 frames of capped brood
- Day 1 and Day 4: Feed this hive 4 to 10 liters of a mixture of pollen, honey, sugar, water and the Caspian Solution. This will stimulate the bees to produce large quantities of worker and royal jelly



## Day 4: Worker / Royal Jelly Mixture



# New Method for Raising Queens

## Method (continued)

- Day 5 to 7: Remove the queen, select a minimum of 60 larvae for grafting. Place the resultant bars of queen cells (in two frames) on either side of the remaining frame of larvae
- Between 1 and 4 days after the grafting, feed this colony 2 to 3 times. A total of 4 to 8 liters of pollen, honey, sugar, water and the Caspian Solution



# Typical Queen Cells





# Typical Queen Cells





# Sufficient Population





# Typical Queen Cells





# Sufficient Population





# New Method for Raising Queens

Method (continued)

## Accelerated Method

- Pick the strongest hive in the apiary
- Remove the queen, all capped brood and all but one frame of larvae
- Four hours after the removal step introduce the two frames c/w queen cells.
- Feed solution (same as first method)

# New Method for Raising Queens

## Results

- Queen cells are well nourished
- Queen cells are large (see pictures)
- The resultant queens are large (thorax, abdomen and internal organs)



# New Method for Raising Queens

## Discussion

- The key to making good queens is nutrition (before and after grafting)
- High nutrition comes from a solution that contains Caspian Solution, pollen, honey, sugar and water.
- The pollen should be in a liquid form not dry.
- Bees will eat pollen only if they are stimulated to do so by pheromones from the queen and the larvae

# New Method for Raising Queens

Discussion (continued)

My investigations have linked many problems to: low nutrition in the cell builder hive, the grafting of dry larvae, the grafting of old larvae and not enough drones in the mating yard



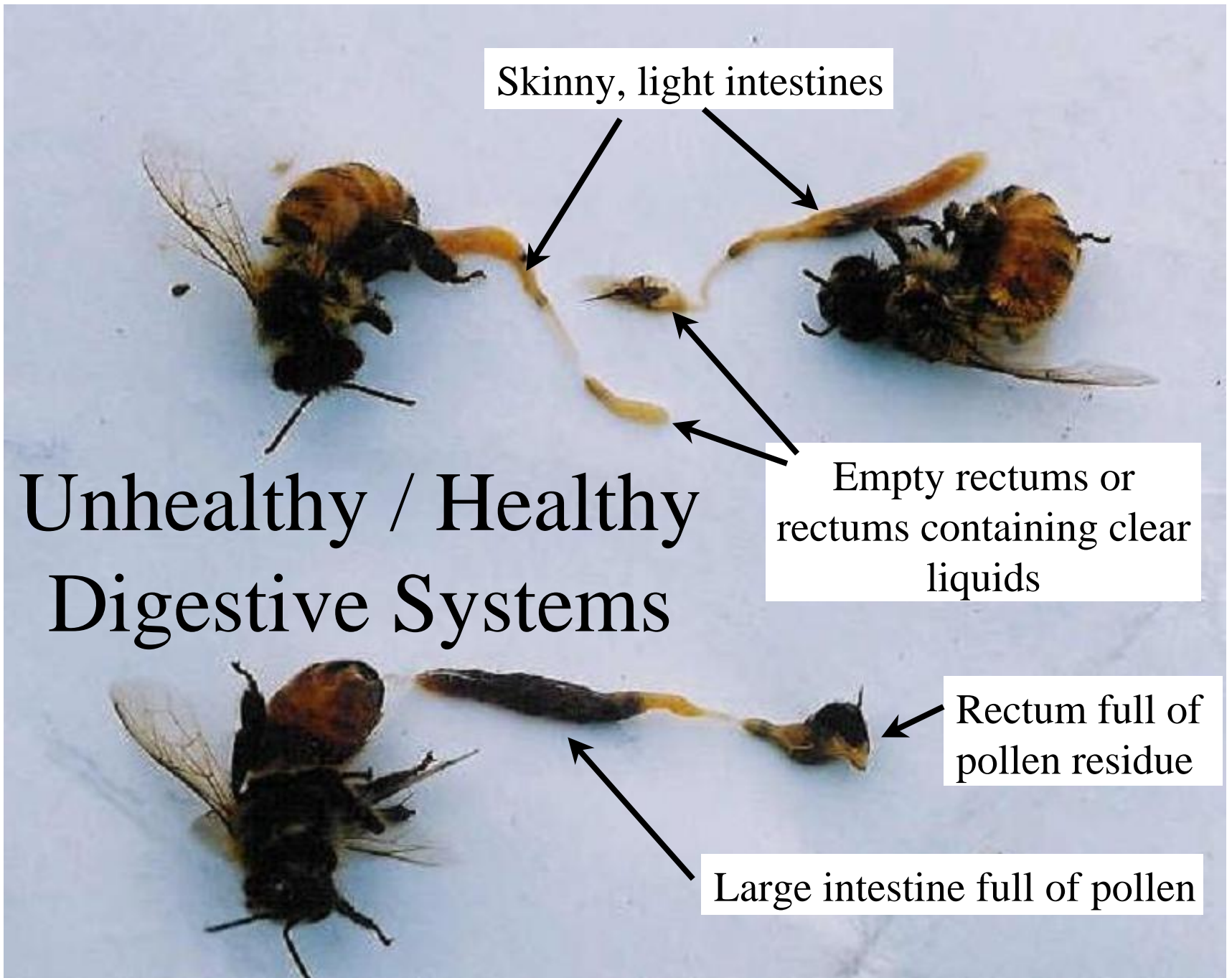
Skinny, light intestines

Empty rectums or  
rectums containing clear  
liquids

# Unhealthy / Healthy Digestive Systems

Rectum full of  
pollen residue

Large intestine full of pollen



# Salkbrood

Caused by Queens (from any strain) that were raised without proper nutrition





# Chalkbrood

Caused by Queens (from any strain) that were raised without proper nutrition

